

Community Ministries of Rockville becomes...

# Community Reach

of Montgomery County

## Annual Report Fiscal Year 2019

July 1, 2018 - June 30, 2019



Healthcare • Housing • Emergency Assistance • Education • Eldercare



# A Message from Our Leadership

**It was, indeed, a “transformative” year!**

Fiscal year 2019 began the way most do, with our staff evaluating the work we performed in FY2018, acknowledging our successes and making improvements in areas where we could do better.

About halfway through the year, the Board of Directors voted to re-brand Community Ministries of Rockville as Community Reach of Montgomery County. This decision was made after much consideration. Through a grant, Taproot Foundation completed a study to determine what program participants, supporters, and partners, as well as those who did not know us, thought our purpose was, based on our name. “Ministries” led many to assume our work involved the teachings of a specific religion. “Rockville” led many to believe our services were only available to residents of Rockville. Neither of those impressions correctly represented what we were doing in 2019; so it was time to “transform” our name to one that better stated who we were.

Then we had to come up with a name – and a logo - that did just that!

The Board decided that Community Reach of Montgomery County fit the bill. A logo created by Kari Mason, a student/intern at Universities at Shady Grove, with a heart and two connected hands gave the visual impact to match the words. Our services “reach” into the community to lift up the vulnerable. The community “reaches” out to us for services, and also to help us provide those services. All but one of our areas of service works with the wider community of Montgomery County as well as Rockville. We do all this together, hand in hand, with our community.

At our Annual Gala in April, we revealed our new name and logo. The “reveal” was fun and made for an even more exciting evening. Then came the hard work of letting the rest of our community know we were still the same organization, offering the same wonderful programs. We were just transforming the name we used to do it!

We know it will take many months, maybe years, for all of us to stop saying “CMR” and have “Community Reach of Montgomery County” roll off our tongues as easily. However, we really like the new name, and logo. Hope you like this transformation as well!

Finally, no annual report would be complete without our heartfelt thanks to you, our benefactors, volunteers, Committee and Board members who help Community Reach of Montgomery County achieve its mission every day. You are the glue that holds us together and the fuel that drives us to serve the most needy citizens of the community. To learn how you or your organization can get involved, please reach out to Andrea Kempner-Wink, Director of Development at 301-637-0172 or [AndreaKWink@CMRocks.org](mailto:AndreaKWink@CMRocks.org).

Yours Respectfully,

Paul Love  
Chairman of the Board



Agnes Saenz  
President and Executive Director



# CONTENTS



Rockville Emergency Assistance Program.....	2
Senior Reach Program.....	3
Housing Program: Jefferson & Rockland Houses .....	4-5
Language Outreach Program.....	6
Holiday Giving Program.....	7
Mansfield Kaseman Health Clinic .....	8-9
Community Reach Snapshot FY2019 .....	10-11
Our Volunteers.....	12-14
Our Donors.....	15-17
How Your Support Helps .....	18
Income & Expense Report.....	19
Staff, Board, Committees.....	20-21
2020 Calendar of Events & Contact Information .....	Back Cover



# Rockville Emergency Assistance Program

Financial Assistance and Referrals for Social Services

*Established 1981*

## *FY 2019 Statistics*

<b>Clients Assisted Financially</b>	<b>336</b>
Housing	173
Prescription/Medical	35
Utilities	121
Other Needs	7
<b>Total Financial Assistance Provided</b>	<b>\$67,419</b>
<b>Clients Referred</b>	<b>234</b>
Food	33
Dental	108
Vision	62
Clothing	29
Computers	2
Volunteers:	11
Volunteer Hours:	642
In-Kind Goods & Services:	\$15,577
<b>Total Program Costs:</b>	<b>\$156,620</b>



*I thank them very much for the blessing \$ me and helping my family*

Ms. R was raising three children under the age of 10 on her single income when she had to have a medical procedure that required she stop working for three months. She received an eviction notice as her rent could not be covered by her diminished income. REAP was able to help pay her rent for one month. Her family avoided becoming homeless and she was able to return to work and pay her expenses once again. Now that she is healthy again, we do not expect she will be returning to REAP for financial assistance.



*Services*  
Financial Assistance:  
Prevention of Eviction &  
Utility Termination  
Prescription/Medical Needs  
Referrals for:  
Dental Care  
Vision Care  
Food  
Clothing  
Computers



A retired school teacher and senior citizen living on a fixed income, Ms. B lives in a home she owns. Her water pipes developed a large leak and she had it repaired. The leak made her water usage much higher than quarter. She could not afford to pay the full balance of the large water bill, especially after paying for the repair, and she received a disconnection notice. With financial assistance from REAP to cover a portion of the bill, payment was made and the water remains on.

*REAP is a good organization that helps you in time of your crisis. I was very pleased with the service and care. Very nice and polite while taking care of my crisis.*



From Elderly Ministries to

# Senior Reach Program

Homecare and Home Repair Services for Rockville Seniors Aging in Place

*Established 1983*



Due to health issues, Ms. D, a long-time resident of Lincoln Park, is blind and no longer has use of her legs. Her air-conditioner stopped working in the summer heat. Senior Reach hired an HVAC specialist to rewire the unit so it once again cooled her house. While working through the AC issues, Senior Reach staff determined Ms. D would be well served by receiving deliveries of Manna food, as well as home care services. Ms. D qualified for food assistance, but even with the help of her family close by, it was difficult to arrange for the Manna pick-up and she could manage very little cooking. Our volunteers regularly deliver food to Ms. D, and the homecare aide provided by Senior Reach prepares meals, does light housekeeping, and helps Ms. D with personal care. With the help of her family and these services, Ms. D expects to remain in her own home for many more years.



Ms. G is a refugee from a war-torn country in Africa. She has lived in Rockville and been a participant in Senior Reach for many years. Through our Mansfield Kaseman Health Clinic, Ms. G was referred to a cardiologist and treated for acute pulmonary edema from heart problems. She needed to have oxygen at all times to be able to breathe, but could not afford that equipment, which can run as high as \$5,000. Senior Reach contacted a local hospital and was able to get an oxygen concentrator which removes impurities and nitrogen from the air to offer the user comfortable breathing. Because no oxygen bottle is used, there are no continuing costs.

## *FY 2019 Statistics*

Total # of Clients Served In FY19: 89  
Total Households Served: 80

### **Home Care Services**

Number of Clients Served: 52  
Hours of Client Care: 3,860  
Value of Client Care: \$96,464

### **Safe And Habitable Services**

Total Projects: 81  
Value of Projects: \$36,709  
Months of Life Alert Systems Provided: 498

Volunteers: 75  
Volunteer Hours: 439  
In-Kind Goods & Services: \$20,193

**Total Program Costs:**  
**\$291,752**

## *Services*

Home Care  
Home Modifications/Repair  
Case Management  
Friendly Callers and Visitors  
Furnace Cleaning and Repair  
Assistive Devices  
Food Deliveries  
Education Workshops  
Social Activities



# Housing Program: Jefferson House

## Permanent Supportive Housing for Men

*Established 1991*

### *FY 2019 Statistics*

Number of Clients Served:	6
Bed Nights:	2,105
Case Management Hours:	300
Volunteers:	36
Volunteer Hours:	160
In-Kind Goods & Services:	\$35,949

**Total Program Costs:**  
**\$125,610**

### *Services*

**Case Management**  
**Life Skills**  
**Client Support**  
**Affordable Housing**



Mr. H moved from Chase Partnership House to Jefferson House in the spring of 2015. In April, 2019, Mr. H was able to get a lease in his name for the first time and moved to his own apartment in Silver Spring. At Jefferson House, he retained his sobriety, dealt with barriers that had kept him from becoming self-sufficient, and began to save money to put toward his deposit and first month's rent.



Mr. R, who had lived at Jefferson House for over a decade, was diagnosed with a serious medical condition that required multiple surgeries and ongoing care. As a veteran, he was eligible for benefits and health care through the Veteran's Administration. Transportation and administrative issues were barriers to a clear path of health care. Our staff drove Mr. R to appointments, helped him navigate the insurance process, apply for accrued sick leave from his employer, and begin recovery at a rehabilitation center. Mr. R is proud to call Jefferson House his home.



# Housing Program: Rockland House

## Permanent Supportive Housing for Women

*Established 2014*



Ms. M, a former elementary school teacher, has combined her love of knitting with her desire to empower others. Each week she travels to the Women's Shelter, where she lived before moving to Rockland House. At the shelter, she teaches knitting to residents. This skill gives the women a productive way to use down time, relieve stress, and even create items they can wear or share.

One of the residents of Rockland House, Ms. D, moved in with a chronic illness that eventually became terminal. The staff and other residents helped care for her as the illness progressed. Although her

family had not reconnected with her before she passed away in the winter of 2019, they expressed much gratitude that Ms. D had been well cared-for and had a warm, comforting place to live out her final months.

### *FY 2019 Statistics*

Number of Clients Served:	4
Bed Nights:	1,313
Case Management Hours:	281
Volunteers:	66
Volunteer Hours:	282
In-Kind Goods & Services:	\$9,113
<b>Total Program Costs:</b>	<b>\$79,484</b>

### *Services*

Case Management  
Life Skills  
Client Support  
Affordable Housing

# Language Outreach Program

## English as a Second Language, Citizenship and Conversation

*Established 1993*

### *FY 2019 Statistics*

Number of Unduplicated Clients:	670
Adults:	559
Children:	111
ESL Instruction Hours:	1,530
Citizenship Instruction Hours:	90
Conversation Instruction Hours:	220
Childcare/Tutoring Hours:	1,164
Number of Students Who Became U.S. Citizens:	25
Hours Provided for Partner Conversation Program:	172
Family Education Success Project: 10 Children & 5 Parents	65
Volunteers:	1,945
Volunteer Hours:	\$97,926
In-Kind Goods & Services:	

**Total Program Costs:**  
**\$362,784**

It was important to Justina to be in an intermediate level ESL class, although she had difficulty understanding the teacher's instructions. LOP staff knew keeping her engaged in learning meant allowing her to be at a level where she would struggle – she would stop her quest to learn if she was placed in a beginner class. Other students translated class



instructions so she could better follow along. Because learning and fitting into the class was so important to her, she came early for every session. Her teacher was dedicated to her success so he would be there early as well. He took that time to get to know her, and build her confidence in speaking and understanding English. By the end of the semester, she was performing work more independently, was able to confidently speak English in class, and understand instructions without assistance.

Belinda was enrolled in the citizenship class but she needed to improve her English skills in order to be able to pass the citizenship test. Her teacher recommended she take LOP's conversation class to increase her ability to correctly pronounce words and understand daily conversation. She was so anxious to become a citizen, she took conversation classes in the morning and evening. Those classes also offered a volunteer who was able to give her some one on one attention. The classes made the difference. She passed her US Citizenship interview and test, and is a US. Citizen.



*Services*  
English as a Second Language (ESL)  
Citizenship Test Preparedness  
Conversation Instruction  
Child Tutoring and Child Care  
Naturalization Application Assistance





# Holiday Giving Program

## Making the Holidays Special for Those in Need



The remarkable Holiday Giving supporters once again provided beautiful dinner baskets and an astonishing array of toys and gift cards for the Montgomery County Holiday Giving Coalition participants we serve. Because of these donations, we were once again able to take late referrals and serve community members who lived in areas of the County that were not covered by another provider.



“To the Donors and families of Landon School, Wishing you a very Happy Thanksgiving as you gather with friends and loved ones! Me and my family were so grateful to receive your generous Thanksgiving Basket”

~ Ms. S & Family



### *FY 2019 Statistics*

Thanksgiving Meals Provided:	328
December Holiday Meals Provided:	59
Children Served with Gifts:	335
Value of Toy Donations:	\$5,200
Value of Holiday Food & Gift Cards:	\$31,005
Number of Holiday Giving Donors:	27
Number of Partner Organizations Assisted:	2
Volunteers:	60
Volunteer Hours:	208
In-kind goods & Services:	\$39,586

Total program costs: \$0

**All holiday meals, gifts and gift cards are donated**

### *Services*

**Food Basket Distribution  
Toy Distribution**





# Mansfield Kaseman Health Clinic

*Established 2009*

## *FY 2019 Statistics*

Patients Served:	1,146
Patient Visits:	3,259
Primary Care Visits:	2,454
Behavioral Health Visits:	164
Endocrinology Visits:	132
Gastroenterology Visits:	182
Gynecology Visits:	53
Podiatry Visits:	274
Clinic Days:	247
Clinic Hours:	3,212
Lab Visits:	1,798
Referrals to Outside Specialists:	356
Behavioral Health Screenings:	1,089
Patients Enrolled in Behavioral Health:	114
Volunteers:	78
Volunteer Hours:	2,339
In-kind Goods & Services:	\$1,033,919
<b>Total program costs:</b>	<b>\$1,752,424</b>



An over-the-counter pregnancy test showed positive for Ms. A. Without health insurance, she was concerned about how she would be able to provide this baby with the best start through great pre-natal care. She made her first appointment at Kaseman to confirm the results and see if there were any options available. Our nurse practitioner confirmed the results at the onsite lab, and Kaseman staff referred her to the Montgomery County Maternity Partnership Program. The program provides all prenatal care and delivery for uninsured women at local partner hospitals. The total patient price is \$450. The patient returns to their primary care provider (Kaseman in this instance) for all other medical needs. Ms. A was comfortable that she would be receiving excellent care at a price she and her husband could manage.

## *Services*

**Primary Care**  
**Behavioral Health**  
**Cancer Screening**  
**Endocrinology**  
**Gastroenterology**  
**Gynecology**  
**Health Education**  
**Internal Medicine**  
**Laboratory Tests**  
**Pharmacy**  
**Podiatry**  
**Pulmonology**  
**Referrals to Specialty Care**  
**Referrals to Surgery**



Ms. J was concerned about feeling continually tired, having heart palpitations, and sudden weight loss, so she made an appointment at Kaseman. Lab results showed she had thyroid problems, so the Clinic referred her to our endocrinologist. He prescribed radiology tests and recommended a treatment plan. Kaseman staff found funds to help cover the expensive test costs and Ms. J comes back to Kaseman for regular follow-up visits. She told the staff, "I used to cry all the time because I did not know what was going on...(now) I feel fine and blessed that the team guided me and helped pay for the tests."





# Healthcare and Health Education for Uninsured and Medically Underserved Montgomery County Residents



Patient care and the improved health of our patients are the main goals of the Kaseman Health Clinic. The Clinic tracks medical quality measures using the Healthcare Effectiveness Data Information Set (HEDIS) benchmarks for chronic care screening including diabetes and hypertension, and for cancer screenings including cervical, colon, and breast cancer.

During FY19, the MKHC was very successful in meeting or exceeding HEDIS rates.

- 66% (222 out of 339) diabetic patients had HbA1c below 8 (HEDIS 48.1%).
- 63% (469 out of 742) hypertensive patients had blood pressure control lower than 140 over 90 (HEDIS 56.8%).
- 69% (669 out of 964) female patients ages 21-64 were screened for cervical cancer (HEDIS 66.7%).
- 60% (415 out of 698) patients 50-74 were screened for colorectal cancer (HEDIS PPO 59%).
- 61% (750 out of 1,234) female patients ages 40-74 were screened for breast cancer. (HEDIS 50.4%).

## Mansfield Kaseman Health Clinic Board

Mary Jane Joseph, RN, BC, CPHQ, *Chair*  
Lynnette Gannaway  
Angeline Lazarus, MD  
Donna Perry, MD  
Eunmee Shim, RN, MSN

Stephanie Wright, FNP, PHD  
Agnes Saenz, *Ex-Officio, Executive Director*  
Paul Love, *Ex-Officio, CMR Board Chair*  
Sheila Levin, MD, *Medical Director*

# WE CHANGED OUR



1. Our name gave people & foundations the impression we were a church and they **wanted** to support a religious group.
2. Because we were “of Rockville,” some **wanted** to support us because they assumed we **only** served Rockville residents.
3. When we named ourselves, most of us helped our community through our faith group.

**CMR’s Mission:** Community Ministries of Rockville seeks to improve the quality of life for the most vulnerable of Montgomery County residents by providing them with basic health and human services and advocating on their behalf, with the goal of helping them achieve and maintain self-sufficiency.

**CMR’s Vision:** The vulnerable population of Montgomery County achieves self-sufficiency and an improved quality of life.

## The Areas of Service of CMR

**Mansfield Kaseman Health Clinic** delivers health care and health education to medically underserved adult residents of Montgomery County.

**Language Outreach Program (LOP)** teaches English as a Second Language and Citizenship classes to adult immigrants in an affordable program that includes free child care and tutoring.

**Permanent Supportive Housing Program** serves single men and women who were previously homeless at Jefferson House and Rockland House.

**Rockville Emergency Assistance Program (REAP)** steps in with financial aid to Greater Rockville residents facing eviction, utility termination, or who are in need of prescriptions or medical procedures; and offers referrals for social services (food, clothing, dental and vision care) to any County resident.

**Elderly Ministries Program** enables low- and moderate-income seniors to age in place by offering weekly home care services as well as home repairs and modifications that ensure safety and functionality.

**Holiday Giving Program** collects and distributes hundreds of donated meals and gifts to needy families for Thanksgiving and the December holidays.



COMMUNITY MINISTRIES OF ROCKVILLE, INC.



Community Reach  
of Montgomery County



# NAME BECAUSE

1. Our name gave people & foundations the impression we were a church and they **did not want** to support a religious group.
2. Because we were “of Rockville,” some **did not want** to support us because they assumed we did not help residents who lived outside of Rockville.
3. People want to serve their community from their workplace, their social organization, their faith group, or just on their own.



**Community Reach of Montgomery County’s Mission:** Community Reach of Montgomery County seeks to improve the quality of life for the most vulnerable of Montgomery County residents by providing them with basic health and human services and advocating on their behalf, with the goal of helping them achieve and maintain self-sufficiency.

**Community Reach of Montgomery County’s Vision:** The vulnerable population of Montgomery County achieves self-sufficiency and an improved quality of life.

## The Areas of Service of Community Reach of Montgomery County

**Mansfield Kaseman Health Clinic** delivers health care and health education to medically underserved adult residents of Montgomery County.

**Language Outreach Program (LOP)** teaches English as a Second Language and Citizenship classes to adult immigrants in an affordable program that includes free child care and tutoring.

**Permanent Supportive Housing Program** serves single men and women who were previously homeless at Jefferson House and Rockland House.

**Rockville Emergency Assistance Program (REAP)** steps in with financial aid to Greater Rockville residents facing eviction, utility termination, or who are in need of prescriptions or medical procedures; and offers referrals for social services (food, clothing, dental and vision care) to any County resident.

**Senior Reach Program** enables low- and moderate-income seniors to age in place by offering weekly home care services as well as home repairs and modifications that ensure safety and functionality.

**Holiday Giving Program** collects and distributes hundreds of donated meals and gifts to needy families for Thanksgiving and the December holidays.

## That new name is kind of long; may we shorten it?

Sure! Let’s just go with **Reach** until people really get to know our new name and so they don’t confuse us with other local organizations with acronyms that would be similar to what ours could be!

# Thank You to Our Volunteers

July 1, 2018 - June 30, 2019

## BASIC

Allegra Marketing  
Phyllis Aaronson  
Kail Adou  
Nalu Adou  
Yam Adou  
Nancy Aldous  
Richard Amsnacher  
Genesis Argueta  
Sid Bala Balakrishnan  
Emma Bassett  
Justine Bassett  
Ryan Bassett  
Sage Bautisle  
Kayla Bearse  
Jenny Benitez  
Oscar Berrios  
Rochelle Berrios  
Shauna Bill  
Gabriela Botura  
Anne Brent  
Crystal Brown  
Mirtha Brown  
Devar Burbage  
Suzie Burbage  
Nestor Campos  
Rae Pearl Canizares  
Cindy Chan  
Baila Churilla  
Shane Churilla  
LaShonda Coleman  
Betty Crisp  
Corey Crumm  
Erick Diaz  
Keyli Diaz  
Mahan Dorcas  
Jaylah Dorsey  
Jody Eccleston  
Mary Edens  
Damon Ehrlich  
Maria Eisel  
Jessica Fagnani  
Marcela Falck-Bados  
Juanita Farmer

Beryl Feinburg  
Elise Feingold  
Bob Fleshmen  
Russell Fox  
Kathleen Franke  
Monica Gant  
Paul Geller  
Rachel Gnoce  
Catelin Gomez  
Anne Goodman  
Lynn Goodman  
Jenna Goudarzi  
Cathy-Ann Grundmayer  
Carol Hammond  
Carol Hannaford  
Alex Hayes  
Darryl Hayes  
Gail Hayes  
Kathy Hougum  
Ray Hummel  
Gaines Hurdle  
Ginna Ingram  
Kayla Jackson  
Debra Jacobs  
Haig Jamgochian  
Assoho John  
Andrea Jolly  
Amanda Jones  
David W Jones  
Julie Jones  
Readet Kitle  
Howard Kravitz  
Liane Kuhuns  
Daniella Landau  
Brian Lee  
Chuck Lee  
Eric Leeds  
Gail Leeds  
Catherine Leggett  
Alex A Li  
Adrian Lloyd  
Nicolas Lloyd  
Jaymie Lorthridge  
Paul Love

Gale Luce  
Max Manley  
Christine Manor  
John McIntosh  
Melissa Mckenna  
Miles & Stockbridge  
Kathia Miles  
Jeffrey Monterrosa  
Heather Moore  
Joey Moore  
Paula Moore  
Scott Moore  
Brian Nguyen  
Daniel Nguyen  
Van Nguyen  
Rouzanna Oganissian  
Mariela Osinaga  
Cathy Padalino  
Christine Padalino  
Kelly Padalino  
Robyn Parks  
Pat Shultz  
Matt Peery  
Alexander Pichugin  
Andrey Pichugin  
Josh Piety  
Mary Sue Pletcher  
Mara Qualkenbush  
Rochelle Qualkenbush  
Leslie Quespicos  
Julie Raab  
Patricia Rios  
Andrea Rogers  
Colin Rosley  
Joane Rosley  
Rose Rosley  
Suzanne Rotbert  
Ellen Ryan  
Cindy Sadur  
Donnelly Sanchez  
James Sanchez  
Keidy Sanchez  
Kim Schifrin  
Andrea Shandell

Beth Shapiro  
Justin Lloyd Shaw  
Nancy Shenk  
Gail Sherman  
Tom Shields  
Pat Shultz  
Benjamin Shuman  
Kathy Sklar  
Veronica Smith  
Andrew Spencer  
Laura Stein  
Kathleen Stobie  
Nick Strother  
Drew Taubman  
David Torres  
Santiago Torres  
Penny Trusty  
Hana Tsegeye  
Robert Umek  
Becky Unhone  
Alberto Vanegas  
Christopher Vanegro  
Denise Violette  
Xiaolin Wang  
Brian Weissenberg  
Terry Whitehouse  
Bryan Wilson  
Kelly Wilson  
Adam Wise  
Bob Wise  
Kathleen Wise  
Yang Wong  
Yushin Wong  
Jutharat  
Wutwattanapisan  
Alex Yang  
Carrie Yearick  
Cindy Yi  
Lili Zhou

## SENIOR REACH

Nancy Aldous  
Claudia Alp  
Angela Ansberry



# Thank You to Our Volunteers

July 1, 2018 - June 30, 2019

Sarah Appleby  
Cecilia Bailey  
Barr Plumbing Inc  
Kara Brounstein  
Judy Clavelli  
Lorry Clavelli  
Mark Conlon  
Paul Conlon  
Nigel Davis  
Matt Douglas  
Anna Duke  
Caitlin Foliard  
Minum Goldstein  
Ben Gorman  
Mary Grassick  
Green Maidworks  
Cathy Ann Grundmayer  
Ed Grundmayer  
Bob Harbaum  
Rhonda Harris  
Brian Haugen  
Rohan Haugen  
Christine Hellauer  
Kate Hutt  
Liesel Kaufman  
Brett Klvetz  
Sagan Larson  
Chuck Lee  
Kristen Lekstrom  
Gale Luce  
Jeff Luce  
Lou Masciocchi  
Sean McCarthy  
Leo Mendes  
Mike's Appliance  
Deborah Moore  
Joey Moore  
Emma Njoki  
John Pailen  
Sammy Rich  
Destiny Robinson  
Arielle Roffman  
Sheldon Sacks  
Nicholas Shears

Eliana Shimshi  
Benjamin Shuman  
Phil Smith  
Leslie Speller  
Matthew St. John  
Natalie Stahl  
Richard Stolz  
Roger Stone  
David Strauss  
Mason Stults  
Rick Stumpf  
Cora Sturtevant  
Taryn Tenney  
Valeria Tovar  
Rui-Hung Tsai  
John Tyner  
LeighAnne Valdes  
Dylan Walsh  
Alyssa Warring  
Betsy Wilder  
Curtis Winans  
Maxine Winans-  
Appleby  
Noelle Wiser  
Jutharat  
Wutwattanapisan  
Mali Yavnai

## ROCKLAND

Paul Amorosi  
Sumner Bradley  
William Breslin  
Vivian Byrd  
Nancy Clark  
Judy Clavelli  
Lorry Clavelli  
Quincey Collins  
Elizabeth Cooper-  
Martin  
Sophie Duncan  
Maria Eisel  
Erin Fernandez  
Taishan Gary  
Portia Gharai

Kim Goldberg  
Sara Gray  
Jean Gregory  
Judi Halperin  
Rohan Healy  
Connie Heller  
Rachel Hickson  
Anna Hoernig  
Addie Horowicz  
Sasha Huberman  
Rin Iimi  
Lou Kallas  
Pat Kallas  
Jackie Kauff  
Pat Kaufman  
Ava King  
Leta Kopp  
Carol Lee  
Chuck Lee  
Gale Luce  
Jeff Luce  
Brian M.  
Kari Mason  
Deb McDonald  
Nancy Migdall  
Miles & Stockbridge  
Katherine Milner  
Nicki Noble  
Chloe O'Rourke  
Donna Perry-Lalley  
Shauna Pokras  
Luke Raffo  
Cole Remington  
Sherri Rubin  
Joan Schneider  
Caleb Smyth  
Loki Smyth  
Roger Stone  
Jack Sullivan  
Iman Syed  
Lindsey Tanenholz  
Beth Van Lenten  
Kirsten Vanderhorst  
Linda Vann

Sara War  
Carlotta Watkins  
Joe Watkins  
Kaitlyn Watkins  
Owen Watkins  
Amy Weinberg  
Phyllis Windle

## JEFFERSON

Vivian Byrd  
Nancy Clark  
Judy Clavelli  
Lorry Clavelli  
Elizabeth Cooper-  
Martin  
Kim Goldberg  
Jean Gregory  
Judi Halperin  
Connie Heller  
Rachel Hickson  
Jackie Kauff  
Pat Kaufman  
Leta Kopp  
Carol Lee  
Chuck Lee  
Gale Luce  
Jeff Luce  
Nancy Migdall  
Miles & Stockbridge  
Katherine Milner  
Nicki Noble  
Donna Perry-Lalley  
Shauna Pokras  
Sherri Rubin  
Joan Schneider  
Caleb Smyth  
Loki Smyth  
Roger Stone  
Beth Van Lenten  
Linda Vann  
Carlotta Watkins  
Joe Watkins  
Kaitlyn Watkins  
Owen Watkins

# Thank You to Our Volunteers

July 1, 2018 - June 30, 2019

Amy Weinberg  
Phyllis Windle

## CLINIC

Nancy Aldous  
Elizabeth Anderson  
Milca Arellano  
Benchaa Boualam  
Christy Brown  
Crystal Brown  
Casa of MD  
Juliet Charles  
Sean Courtney  
Taneka Courtney  
Marlen Cruz  
Raul Delgado  
Dr. Michael Dempsey  
Kayla Dillion  
Sauma Doka  
John Eisel  
Maria Eisel  
Marie Ekamby  
Melissa Elesinmogun  
Jennifer Felton  
Betti Fogel  
Anna Geier  
Antonich Genato  
Lynn Goodman  
CathyAnn Grundmayer  
Cassandra Hairston  
Christopher Hairston  
Gabe Halpern  
Evan Hansen  
Sharyn Hartsfield  
Pedro Herrera  
Cheryl Jackson  
Gabriela Jimenez  
Jernelle John  
Andy Jordan  
Wanda King  
Chuck Lee  
Eric Leeds  
Gail Leeds  
Jason Levi

Dr. Sheila Levin  
Anthea Levy  
Cesar Lianati  
Molly Lonneman  
Dr. Francisco Lugo  
Omar Mahmoo  
Maria Maya  
Dr. Urvi Mehta  
Miles & Stockbridge  
Dr. Thomas Miller  
Evan Moore  
Jessica Moore  
Tin Tin Myint  
Maria Pearson  
Primary Care Coalition  
Hector Ramirez  
Valentina Ramirez  
Nora Reyes  
David Reynoso  
Joshua Richards  
Miranda Rip  
Ingrid Rocha  
Ellen Ryan  
Jeffrey Sanchez  
Gayle Santiago  
Joan Schneider  
Laura Severgand  
Nancy Shenk  
Gail Sherman  
Pat Shultz  
Ken Skidmore  
Felicia Tanu  
Dr. Claudia Taubman  
Cecilia Velarde  
Gabriela Villareal  
Rick Wiczorek  
Stephanie Wright NP  
Carrie Yearick

## LOP

Maria Abarca  
Nancy Aldous  
Keyli Alvarado  
Beatriz Ama

Dayana Andrade  
Genesis Argueta  
Amsalu Beza  
Sumner Bradley  
Erick Caballero  
Marju Casellas  
Dylan Chiu  
Odalys De La O  
Anthony Diaz  
Katy Diaz  
Ginger Dixon  
Sophie Duncan  
Portia Gharai  
Irvin Gonzales  
Leonor Gonzales  
Sara Gray  
Cathy Ann Grundmayer  
Michelle Hamilton  
Cager  
Anna Hoernig  
Addie Horowicz  
Sasha Huberman  
Alexia Hurtado  
Christel Hurtado  
Rin Iimi  
Ava King  
Chuck Lee  
Katherine Lemus  
David Lu  
Josh Lu  
Carlos Martinez  
Tricia Massey  
Johanna Medrano  
Holey Mendez  
Alejandra Moreno  
Guillermo Navarro  
Jeffrey Navarro  
Diana Nguyen  
Elizabeth Orellana  
Stephen Orellana  
Chloe O'Rourke  
Emely Palacios  
Xavi Palacios  
Steven Parada

Kathy Reyes  
Rolando Ruiz  
Donnely Sanchez  
James Sanchez  
Gail Schmitt  
Ben Shuman  
Erick Simmontis  
Kathy Sklar  
David Strauss  
Iman Syed  
Lindsey Tanenholz  
Stephanie Umanzar  
Kirsten Vanderhorst  
Josselyn Vasquez  
Sara War  
Sherman Winters  
Rebecca Wyrton

## REAP

Neha Agarwal  
Gloria Bell  
Star Chen  
Walter Cohen  
Beth Isen  
Catherine Khan  
Chuck Lee  
Joyce Lipman  
Emily Pearce  
Linda Rhoads  
Terri Silver





# Thank You to Our Donors

July 1, 2018 - June 30, 2019

## Individual

Angie Abarbanel  
Samathanam Abraham  
Gabriel Acevero  
Michael & Judy Ackerman  
Donald Adams  
Nancy Aldous  
Pat Ameling  
Paul Amyot  
Lisa & Kenneth Anduze  
Jim & Janet Angel  
Carola Arndt  
Lynn & Chris Arndt  
Sandi Atkinson  
Cecilia & Edco Bailey  
Max & Mary Balgoody  
Agnes Bartorelli Saenz  
Manmeet Bedi  
Claire Belford  
Lu Beltman  
Odeth Berlin  
John Britton & Catherine  
Treiman  
Marika Brown  
Mirtha Brown  
Carmen Brun  
Karen & Ralph Buglass  
Anthony & Margaret Bur  
Eric Burch  
Mary Burnet  
Cristin Caine  
Margaret Carr  
Carol Carter  
Virginia Chalmers  
George & Son Hwa Chang  
Paul & Nancy Clark  
Sandra Clark & Alan  
Tolerton  
Rory & Nancy Coakley  
Ramon Codero  
Stanley & Linda Collyer  
Kathleen Conway  
Tony Conrad  
Elizabeth Cooper-Martin  
Emily & Gary Correll  
Cynthia Cotte Griffiths  
Penny Craig-Pickel  
Janet Crampton

Brian Crawford  
Brian & Joan Crowe  
Lawrence Culleen & Nina  
Weisbroth  
Christine Dang  
Martin & Paula Dasler  
Jenny Davlin  
Jim Dawson & Suzanne  
Rotbert  
Pat & Don Decarlo  
Charlie & Trisha Deierlein  
Roy & Linda Deitchman  
Michael Dierks  
Rob Dispirito  
Sylvia Diss  
Glenn & Linda Doerrman  
Richard Doyle  
Susan Drilea  
Robert Drummer  
Loretta Eby  
Jody Eccleston  
Steve & Donna Edwards  
Maria Eisel  
Betty Elwood  
Marc Elrich  
Dawn Ely  
Gary Erenrich  
Ruth Ericksen  
Paul Erickson  
Rebecca Estrada  
Christopher & Kathryn  
Fain  
Enrique Fefer  
Loretta Fehr  
Edward & Beryl Feinberg  
Brian Feldman  
Jim & Kay Fenton  
Edward & Maureen Feroli  
Stephen Fisher  
Margaret & Gregory  
Fitzwilliam  
Sandra Franklin  
Gary & Claire Funkhouser  
Patricia Garnette  
Richard & Eileen Gatti  
Donna Gentry  
Sylvia George & Dodge  
Wells

Richard & Ethel Gilbert  
Elaine Gilby & Charles  
Pavitt  
Joseph Ginther  
Laurie & Tom Gira  
Laurel Glassman  
Otto Gonzalez  
Lynn Goodman  
Richard & Stacey Gottfried  
Mary Grassick  
George Graves  
Joanna Gross  
Cathy Ann & Ed  
Grundmayer  
Carol Hannaford  
Alice Harris  
John & Lois Harris  
Michael Harris  
Walter & Angela Harris  
Ellen Harrison  
Karen Hendricks  
Margie Henry  
Martha Herman  
Winifred Herrmann  
Clare Herington &  
Laurence Platt  
Jim & Theresa Hodgson  
Larry Hogan  
Barbara Holland  
Kathleen Holmay  
Mary Honigsberg  
Jennifer Hough  
Beth Isen  
John Jaeger  
Della James  
Emma James  
Dicran Jamgochian  
Sandra & Jay Jensen  
Marilyn Johnson  
Pat Johnson  
Andrea Jolly  
Brenda Reid Jones  
Mary Jane Joseph  
Karen Judson  
John & Suzanne Junod  
Cheryl Kagan  
Ralph & Catherine Kahn  
Lou & Pat Kallas

Kevin & Emily Kane  
Amy Kass  
Sue Karacki  
Sidney & Sally Katz  
Sharon Kemmerer  
Andrea Kempner-Wink  
Faisal Khan  
Diane Kittower  
Warren Klam  
Leta Kopp  
Julia Korenman  
Daniel Koroma  
Greg & Jeanine Kostka  
Laura Kozero  
Benjamin Kramer  
Rose & Steve Krasnow  
Evan Krichevsky  
Martha Krieger  
Barbara Kritzer  
Sandra Kubalak  
Angeline Lazarus, MD  
Erik Ledbetter  
Charles & Carol Lee  
Gail & Eric Leeds  
Isiah & Catherine Leggett  
Nelson Leroy  
Joan Leshuk  
Sheila Levin, MD  
Randi & Mitchell Levy  
Linda Lewis  
Paul Love  
Bruce Levinson  
Nancy Lewin  
Cynthia Livingston  
Jacqueline Lobien  
Elvita Lobo  
Gail Luce  
Tom & Jacqueline Manger  
Rev. Mansfield & Dr.  
Dianne Kaseman  
Bill & CharylAnn Maas  
Jim & Cynthia Marrinan  
Johanna Marshall  
John Marshall & Cindy  
Callahan  
Kathryn Marshall  
Vaughn Martirosyan

# Thank You to Our Donors

July 1, 2018 - June 30, 2019

Jan May & Rev. Denise  
Giacomozzi  
Janice McCall  
Patrick McCarthy  
Kathy McGuire  
Anne McGuirk  
Deborah McIndoe  
Nancy McIntyre  
Melissa McKenna  
Katherine Michaelian  
Kent & Karen Mikkelsen  
Susan Miranda  
Frank Molony & Carroll  
Saussy  
Elvi Moore  
Scott & Paula Moore  
Jessica Moore-Solorzano &  
Joel Solorzano  
Tia Marie Morton  
Catherine Nardi  
Jessica Nardi  
Donna & Vince Neradka  
Paul Newman  
Bridget & Fred Newton  
Rouzanna Oganissian  
Guy & Dian Olson  
Walter & Patricia O'Neill  
Virginia Onley  
George & Melissa  
Opryszko  
Sima Osdoby  
Julie Palakovich Carr  
Brandon Parks  
Robyn Parks  
Jim & Allison Parsons  
Peg Partlow  
Donna R. Perry, MD  
Sandra Perry  
Florence Phillips  
David Pickel  
James & Susan Pickel  
Daniel Pierce  
Mark Pierzchala & Leslie  
Cross  
Mary Sue Pletcher  
Ann Potteiger  
Barbara Power  
George Prokop

Jean & Janet Provost  
Elizabeth Purcell  
Lily Qi  
Walter Rauser  
Brenda Reid Jones  
Jose Reyes  
Linda & Thomas Rhoads  
Craig Rice  
Cheryl Allen Richter  
Lawrence & Lynn Ann  
Ries  
Ruth Roberts  
Julia Robinson  
Andrea Rogers  
Cecilia & Walter Rojas  
Brenda Rosa  
Lawrence Rossbach  
Fernando Rossel  
Mary Lou Rudloff  
Rici Rutkoff  
Sheldon Sacks  
Agnes Saenz  
Carmen Saenz  
Marianella Saenz  
David & Pofen Salem  
Jacquelyn Salive  
Andre & Patricia Santiago  
James Schaeffer  
Pat & Richard Schaefer  
Bill & Barb Scharf  
Loren Scherbak  
Jane Scherrer-Atlas  
Janice Schiavone  
Kimberlee & Mark  
Schiffrin  
Mark Schilling & Sahar  
Dawisha  
Jim & Denise Schleckser  
Martha Schoonover  
Roald Schrack  
Marion Schreyer  
Liz Schulz  
Sandra Schwartz  
Dale & Jean Schwindaman  
Sarah Seemann  
Randi Selehdar  
Andrea Shandell  
Christine & Mark Shannon

Leann Sherman  
Gail Sherman  
Patricia Shultz  
Ira & Sharon Silverman  
David Smock  
Rebecca Smondrowski  
Jill Sobel  
Mark & Bonnie Sosin  
Barbara Stebbins  
Howard & Leslie Stein  
Cynthia Stewart  
Eileen Stewart  
Judy Stiles  
Richard & Sally Stolz  
Lois Stovall  
Timothy Stranges &  
Rosanna Coffey  
David Strauss  
Connie & Neal Sullivan  
George & Nancy Sushinsky  
Daniel & Anne Syed  
Stuart Tart  
Marilyn & Bill Taylor  
Michael Taylor  
Frances Thompson  
Elizabeth Thornby  
Susan Tipton  
Penny & Marty Trusty  
John Tyner  
Elizabeth Van Lenten  
Ellen Van Valkeburgh  
Lillian Vandermale  
Thomas Vandermale  
Victoria Vergara  
Jane Ann Verner  
Mary Anna & Mel  
Vineyard  
Enrique Viscarra  
Christine & Robert Vocke  
Emil Von Arx  
Penny Wallace  
Thomas Walsh  
Carlotta Watkins  
Matthew & Sandie  
Weston-Dawkes  
Raymond Whalen  
Elizabeth Wilder  
David Williams

Valentino Williams  
John & Mary Wink  
Richard & Christine Wolf  
Marlene Wolfgang  
Stephanie & Bob Wright  
Lise Wurzbacher  
Carrie Yearick  
Samuel Zack

## Corporate

Allegra Marketing Print  
Mail  
American Insurance Trust  
Architectural Ceramics  
Arterix Pest Control  
Arthur Murray Dance  
Studio  
Attman's Deli  
B.F. Saul Company  
Baha'i Community  
Baltimore Symphony  
Baronessa Italian  
Restaurant  
Barrel Oak Winery  
Basignani Winery  
Bassett's Fine Food &  
Spirits  
Bed Bath & Beyond  
Ben & Jerry's of Rockville  
Bonefish Grill  
Bowl America  
Butler's Orchard  
Capital Bank  
Capital River Cruises  
Carefirst  
Catoctin Breeze Vineyard  
Clark Construction Group,  
LLC  
Clyde's Restaurant Group  
Coakley Realty  
Coastal Flats  
Dawson's Market  
Denizens Brewing  
Company  
Early Cassidy & Schilling,  
LLC  
Earth Treks  
El Mariachi Restaurant



# Thank You to Our Donors

July 1, 2018 - June 30, 2019

Envision Health  
Chiropractic & Wellness  
Center  
Fitzgerald Auto Mall  
Flagship Carwash Center  
Fontina Grill  
Friends Of John Sarbanes  
Geneva Day School  
GIBC Digital  
Great Shoals Winery  
Griswold Home Care  
Hair Cuttery  
Hillwood Estate, Museum  
& Garden  
Hispanic Alliance Of  
Montgomery County  
Holton-Arms School  
Intelligent Office  
iPic Theater  
Johnson & Johnson  
Joy of Motion Dance  
Center  
LabCorp  
Landon School  
Les Delices Bakery  
Liberty Mountain Resort  
Lifestyle Nails & Spa  
Little Farms Garden Club  
Loew Vineyards  
Longwood Gardens  
Luray Caverns  
M&T Bank  
Magnolia's at the Mill  
Mayorga Coffee  
Miles & Stockbridge P.C.  
MoCo of Maryland  
Council Of Negro  
Women  
Mon Ami Gabi  
Monster Mini Golf  
National Philharmonic at  
Strathmore  
NIH Federal Credit Union  
Old Line Bank  
Old Westminster Winery  
Panera Bread  
PB Mares, LLP  
Pepco

Potomac Driving School  
Potomac Horse Center  
Powertek Corp.  
Rockville Chamber of  
Commerce  
Rockville Rotary Club  
Rouge Spa  
Round House Theatre  
Roundtop Resort  
Seasons 52  
Seven Springs Mountain  
Resort  
Silver Diner  
Skyline Caverns  
St. Michaels Winery  
Stein Sperling Bennett  
De Jong Driscoll PC  
Stella Barra Pizzeria  
Summer House Santa  
Monica  
Swiss Pastries, Inc.  
Tempo Bookstore  
The Adventure Park  
The Amazing Art Studio  
The Fresh Market  
The Meakem Group  
The Phase Foundation  
The Wine Harvest  
Trader Joe's  
Trapezaria Kuzina  
Washington Mystics  
Washington Nationals  
Washington Redskins  
Washington Wizards  
WCS Construction, LLC  
Westat  
Whitetail Resort  
Yantz Bradbury Assoc.  
York Castle Tropical Ice  
Cream

## Faith

Baha'i Community of  
Rockville  
Christ Episcopal Church  
Clinton AME Zion Church  
Faith United Methodist  
Church

First Baptist Church of  
Rockville  
Latvian Evangelical  
Lutheran Church of  
Washington, DC  
Living Faith Lutheran  
Church  
Millian Memorial United  
Methodist Church  
Mount Calvary Baptist  
Church  
National Lutheran  
Communities & Services  
Potomac United Methodist  
Church  
Potomac United Methodist  
Men  
Rockville Presbyterian  
Church  
Rockville United Church  
Rockville United  
Methodist Church  
St. Barnabas Mission  
Church  
St. Elizabeth Catholic  
Church  
St. John The Evangelist  
School  
St. Raphael Catholic  
Church  
Temple Beth Ami  
The Bargain Box of CEC  
Tikvat Israel Tzedakah  
Fund  
Twinbrook Baptist Church  
Unitarian Universalist  
Congregation of  
Rockville

## Government/Grants

Ada Harris Maley  
Memorial Fund  
City of Rockville  
Correll Family Charitable  
Giving Fund  
Danish Club of  
Washington DC  
Deloitte Consulting LLP

Dimick Foundation  
Family & Nursing Care  
Foundation  
Francis Asbury Palmer  
Fund  
GCAAR Realtors Care  
Fund  
Greater Washington  
Community Foundation  
Helen Wardman Naselli  
Memorial Fund  
Kirby Family Fund  
Kiwanis Foundation of  
Rockville  
M&T Charitable  
Foundation  
MCAEL  
MDRT Foundation  
Meadow Hall Elementary  
School  
Mo Co MD Delta Alumnae  
Foundation  
Montgomery College  
Montgomery County  
Government  
Montgomery County Dept.  
of Parks  
Montgomery County  
Revenue Authority  
Pat & Craig Ruppert  
Family Foundation  
Qlarant Foundation  
Shaman Charitable  
Foundation  
Somerset Elementary  
School  
Texas Instruments  
Foundation  
Thome Foundation  
Trinity Health  
University Of Maryland  
Health Partners  
Wibel Foundation  
Yuen Foundation

# How to Support Community Reach of Montgomery County

While financial donations are critical to support our mission, without supporters' volunteer time and donated items, we would need to find additional funding in the amounts shown in this chart.

**Thank you for all donations!**

## FY19 In-Kind Goods & Services by Program

Rockland House	\$9,113
Rockville Emergency Assistance Program	\$15,577
Senior Reach	\$20,193
Jefferson House	\$35,949
Language Outreach Program	\$97,926
Basic (Operations)	\$104,186
Mansfield Kaseman Health Clinic	\$1,033,919
	<b>\$1,316,863</b>

## Ways to Support Community Reach of Montgomery County



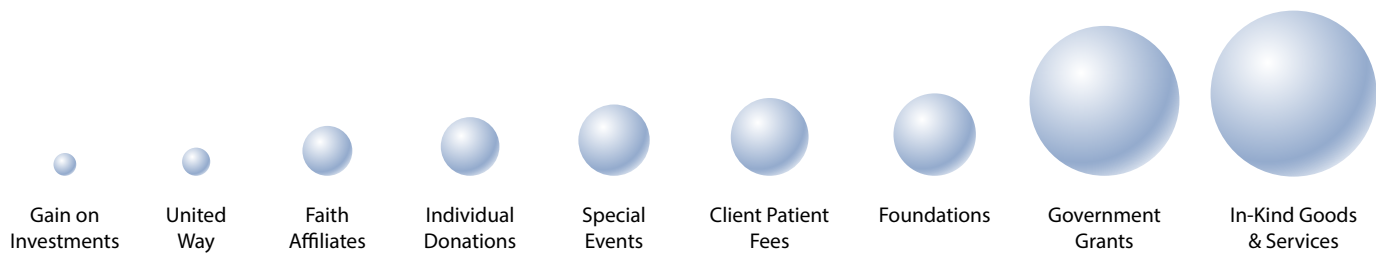
**SERVE ON A COMMITTEE • VOLUNTEER WITH A REACH PROGRAM • SCHEDULE A GROUP PROJECT • ATTEND AN EVENT AND BRING A FRIEND • SPONSOR A REACH EVENT • ARRANGE A SUPPLY DRIVE (CLEANING, SCHOOL, TOYS) • VOLUNTEER AT AN EVENT • MAKE A FINANCIAL DONATION**

## The Impact of Your Financial Donation

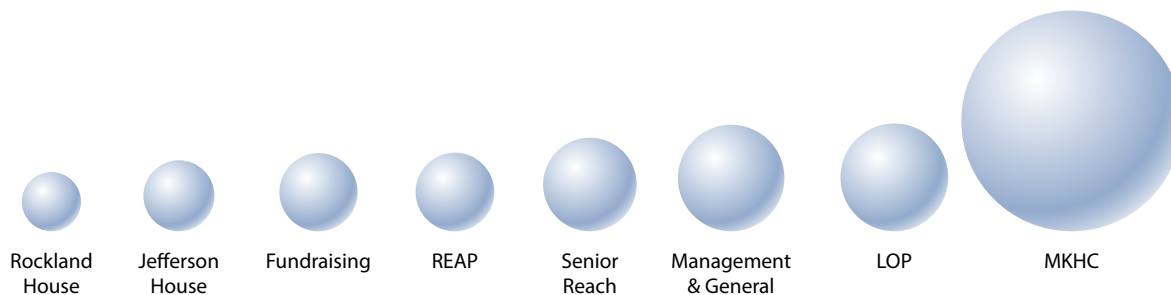
- \$25 provides a gift for a child through the Holiday Giving Program
- \$50 provides a bed rail to protect an elderly client living independently
- \$100 provides a move-in kit for a new Housing resident (bedding, toiletries, etc.)
- \$250 provides two hours of attorney fees for a Language Outreach Program Citizenship student
- \$500 provides an MRI for a Clinic patient
- \$1000 provides eviction prevention for a REAP client
- \$2500 provides a full day of patient visits to the Mansfield Kaseman Health Clinic



# FY19 Income & Expense Report



Revenue by Source	
Gain on Investments	\$2,329.22
United Way,CFC and local campaigns	\$9,505.40
Faith Affiliates & Other Religious Organizations	\$55,377.45
Individuals and Board Donations	\$56,561.30
Special Events	\$232,066.00
Patients' and Clients' Fees	\$232,606.92
Foundations, Corporations, & Other Non-Profits	\$274,327.24
Government Contracts/Grants	\$1,053,163.00
In-Kind Goods and Services	<u>\$1,316,863.29</u>
	<b>\$3,232,799.82</b>



Expenses by Program	
Rockland House	\$79,484.00
Jefferson House	\$125,610.00
Fundraising	\$151,650.00
Rockville Emergency Assistance Program	\$156,620.00
Senior Reach	\$291,752.00
Management and General	\$359,116.00
Language Outreach Program	\$362,784.00
Mansfield Kaseman Health Clinic	<u>\$1,752,424.00</u>
	<b>\$3,279,440.00</b>

Community Reach of Montgomery County's commitment to our mission is consistently demonstrated in the way spending is carefully managed, with 85% of expenditures going directly towards making a difference in the lives of those we serve.

The financial statements of Community Reach of Montgomery County for the year ended June 30, 2019, have been audited by Gelman, Rosenberg & Freedman. A complete copy of the FY2019 audit report including all accompanying notes, can be requested by writing to: Community Reach of Montgomery County, 1010 Grandin Ave., #A1, Rockville, MD 20851. The two tables above and financial notes included in this annual report were prepared by Community Reach of Montgomery County staff using audited figures.

According to FASB (Financial Accounting Standards Board) regulation 116, we must include as income, all grants that we have been notified of winning, despite the fact that no actual funds may have been received.

# Community Reach of Montgomery County & Clinic Staff



## FY20 Reach Staff

**Agnes Saenz**  
Executive Director

**Brenda Reid Jones**  
Deputy Director

**Della James**  
Director of Finance

**Andrea Kempner-Wink**  
Director of Development/Volunteer Services

**Odeth Berlin**  
Rockville Emergency Assistance  
Program Director

**Will Mohan**  
Senior Reach Program Manager

**Cecilia Rojas**  
Language Outreach Program Director

**Laurie Gira**  
Grants Manager

**Pat Johnson**  
Staff Secretary

**Cheryl Kagan**  
Outreach & Fundraising Coordinator

**Enrique Viscarra**  
Accountant

## FY20 Clinic Staff

**Agnes Saenz**  
Executive Director

**Dr. Sheila Levin**  
Medical Director & Volunteer  
Gastroenterologist

**Nancy Hartman**  
Nurse Practitioner

**Sandra Galvin**  
Nurse

**Magda Tranamil**  
Medical Assistant

**Teresita Castro**  
Front Desk Manager

**Jody Eccleston-Gustavson**  
Medicaid Billing Assistant

**Esperanza Gomez-Chaquea**  
Health Education Manager

**Deanna Melara**  
Specialty Care Referral Coordinator

## FY20 Clinic Volunteer Staff

**Blanca Cuervo**  
Behavioral Health Social Worker

**Dr. Michael Dempsey**  
Endocrinologist

**Andy Jordan**  
Volunteer Coordinator

**Dr. Angeline Lazarus**  
Pulmonologist

**Dr. Francisco Lugo**  
Podiatrist

**Dr. Urvi Mehta**  
Internist

**Dr. Thomas Miller**  
Internist

**Dr. Claudia Taubman**  
Gynecologist

**Stephanie Wright**  
Nurse Practitioner



# FY20 Community Reach of Montgomery County Board



## FY20 Board

### **Paul Love, Chair**

Principal, TriBridge Partners, LLC

### **Robert Dorsey**

Former City Council Member, City of Rockville

### **Rev. Carrie Yearick**

Interim Pastor, Boyds Presbyterian Church

### **Judy Ackerman, Vice-Chair**

Provost, Montgomery College, Retired

### **Frank Molony**

Assistant State's Attorney for Montgomery County, State of Maryland, Retired

### **Agnes Saenz**

*Ex-Officio*, President and Executive Director

### **Rae Pearl Canizares, Secretary**

Chairman, Board of Commissioners, Rockville Housing Enterprises, Retired

### **Rouzanna Oganissian**

V.P., Fiduciary Banking Specialist, Capital Bank

### **Donna R. Perry, MD**

*Ex-Officio*, Clinic Board Chair

### **Jody Eccleston-Gustavson**

*Ex-Officio*, Treasurer

## Standing Board Committees

Standing committees are comprised of Community Reach of Montgomery County Board members, staff members and supporters.

**DEVELOPMENT COMMITTEE** plans for and acquires resources needed to meet the needs of the organization and oversees community relations. It provides strategic guidance for development policies and procedures and an annual development plan. It is responsible for identifying potential partners, donors, and volunteers to support our mission. It cultivates supporters; designs fundraising events, direct mailings, donor and volunteer recognition activities.

**FINANCE COMMITTEE** provides financial oversight for the organization. It monitors the financial status including budgeting and financial planning, reporting, and the creation of Internal Controls and Accountability Policies. It is responsible for audit and investment oversight, and ensures follow up on issues mentioned in the Auditor's management letter. It sets an investment policy and ensures it is followed.

**GOVERNANCE COMMITTEE** is responsible for determining the characteristics needed in new board members, finding potential members, and recommending them for election, as well as recommending officers. It is responsible for determining Board Role and Responsibilities, Composition, Knowledge, Effectiveness, and Leadership. It designs and oversees Board orientation, and provides ongoing counsel to the Chair and other Board leaders on steps they might take to enhance Board effectiveness.

**FAITH ADVISORY COMMITTEE** is responsible for ensuring two-way communications between the Board of Directors and faith organizations that support our mission. It provides recommendations to the Board on matters of interest to the faith partners. Committee members serve as liaisons to their boards, committees, and congregations.

# Save These Dates in 2020 for Community Reach of Montgomery County!

Tuesday, January 28, 2020 6:00 p.m. – 8:00 p.m.

## **VOLUNTEER APPRECIATION RECEPTION**

Glenview Mansion

603 Edmonston Drive, Rockville, MD

Sunday, February 9, 2020 4:00 p.m.

## **ROCKVILLE SINGERS AND ROCKVILLE CHORUS CONCERT to benefit REAP**

Rockville United Church

355 Linthicum Street, Rockville, MD

Tuesday, March 3 – Thursday, June 25, 2020

## **LOP ENGLISH AS A SECOND LANGUAGE SPRING SEMESTER**

Various locations in greater Rockville

Placement tests on February 25 and February 27

Saturday, May 23 & May 24, 2020 12:00 p.m. – 8:00 p.m.

## **TASTE OF ROCKVILLE at HOMETOWN HOLIDAYS**

Rockville Town Center

Courthouse Square, Rockville, MD

Saturday, May 30, 2020 6:00 p.m.

## **ANNUAL GALA for COMMUNITY REACH OF MONTGOMERY COUNTY**

Lakewood Country Club

13901 Glen Mill Road, Rockville, MD

Friday, June 26, 2020 7:00 p.m.

## **LOP GRADUATION CEREMONY**

Rockville High School

2100 Baltimore Road, Rockville, MD

Saturday, November 14, 2020 6:00 p.m.

## **CELEBRATION OF MANSFIELD KASEMAN HEALTH CLINIC**

Temple Beth Ami

14330 Travilah Road, Rockville, MD

Saturday, December 19, 2020 6:30 p.m.

## **CLIENT HOLIDAY PARTY**

Location TBD

## Contact Us:

### **Community Reach of Montgomery County**

1010 Grandin Avenue, #A-1, Rockville, MD 20851

Email: [Info@CMRocks.org](mailto:Info@CMRocks.org) • Telephone: 301-637-0730

[www.CMRocks.org](http://www.CMRocks.org)  [@CMRocks.org](https://www.facebook.com/CMRocks.org)  [@CMRockville](https://twitter.com/CMRockville)

Executive Director: [ASaenz@CMRocks.org](mailto:ASaenz@CMRocks.org) 301-917-6806

Deputy Director: [BR ReidJones@CMRocks.org](mailto:BR ReidJones@CMRocks.org) 301-637-0705

Director of Finance: [DJames@CMRocks.org](mailto:DJames@CMRocks.org) 301-637-0243

Director of Development/Volunteer Services: [AndreaKWink@CMRocks.org](mailto:AndreaKWink@CMRocks.org) 301-637-0172

### **Rockville Emergency Assistance Program**

[OBerlin@CMRocks.org](mailto:OBerlin@CMRocks.org)

301-917-6811

### **Housing Program**

[info@CMRocks.org](mailto:info@CMRocks.org)

301-637-0730

### **Mansfield Kaseman Health Clinic**

8 West Middle Lane

Rockville, MD 20850

[info@CMRocks.org](mailto:info@CMRocks.org)

301-917-6800

### **Senior Reach Program**

[WMohan@CMRocks.org](mailto:WMohan@CMRocks.org)

301-637-0171

### **Language Outreach Program**

[CRojas@CMRocks.org](mailto:CRojas@CMRocks.org)

301-251-2136

