



# Community Reach

of Montgomery County

## August 2023 Newsletter

### In This Issue:

**Honoring Agnes Saenz as She Steps Down**  
**Volunteer Spotlight**  
**Reach to Host Rockville Candidate Forum**  
**LOP Summer Success & Fall Semester**  
**Clinic Fall Fundraiser Update**  
**Job Vacancy \* Mark Your Calendars**  
**Volunteer Opportunities**

## Honoring Agnes Saenz As She Steps Down

After over 30 years with our organization, and more than 15 years as its Executive Director, Agnes Saenz will be stepping down in early September.

Join us to honor Agnes and her many contributions to Reach and its programs. We are hosting a gathering at the Kaseman Health Clinic on Wednesday, September 13th from 5-7pm.

*Honor Agnes Saenz as she steps down*

 **Wednesday, September 13th, 5-7pm**

 **Remarks at 6pm**

 **Mansfield Kaseman Health Clinic  
8 West Middle Lane, Rockville, MD**



## Volunteer Spotlight



Many Senior Reach clients live alone and may not have family nearby to check on them. The “friendly caller” program pairs these clients with volunteers who call each week to check in and provide a caring voice. In May, we put out a request for Vietnamese speakers who could connect with some of our clients in their native language. Trinh Le got in touch and now works with three seniors, two of whom are Vietnamese.

Trinh has volunteered with many local charities and is also active with the Greater Rockville Chamber of Commerce through her job as a brand ambassador at ServPro. When Trinh heard about the program through a friend who supports Reach, she thought it sounded like a good opportunity to help. She recognizes how beneficial it is for clients to have someone to speak to in their own language.

Since starting as a friendly caller, she feels like she has made a close connection with the clients, who know they can call or text her at any time. After learning about their situations, she realized many of them don’t have any family or close people in the area. Trinh says that it feels good to know that clients are comfortable reaching out when they are feeling bad or need someone to talk to.

“It feels good to be able to help someone, with big things or little things,” she added. We know that for the Senior Reach clients Trinh works with, a friendly voice every week is not a little thing at all.

Thank you, Trinh, for providing this critical support to our clients and contributing to our goal of helping them age in place. For more information about our current volunteer opportunities, see our Volunteer page - <https://www.cmrocks.org/volunteer>

## Reach to Host Rockville Candidate Forum

### CANDIDATE FORUM



7pm Thursday,  
October 5



603 Edmonston  
Drive, Rockville

Reach & Rainbow Place have been invited by the City of Rockville to host one of three Rockville Mayor and Council Candidate forums.



Community Reach  
of Montgomery County



Rainbow Place

Reach, in partnership with Rainbow Place Shelter, has been invited by the City of Rockville to

host one of three Rockville Mayor and Council Candidate forums. The event will be held at 7:00pm on Thursday, October 5 at F. Scott Fitzgerald Theatre. All are welcome to attend.

In November, City of Rockville residents will choose a mayor from two candidates, and six councilmembers (increased from four). Only one incumbent is running for office.

If you are a resident of the City of Rockville, please save the date for this important forum, and mark your calendars to vote by mail or at one of two vote centers on Tuesday, November 4.

[Learn more](#) about the election and the virtual information session being held on September 14.

More details about the Forum to follow in the next few weeks.

## LOP Summer Success & Start of Fall Semester



The Summer semester of the Language Outreach Program is drawing to an end. This summer, 40 students completed online conversation classes, 62 students completed online ESL classes, and 20 students completed online Citizenship classes.

Classes resume for the Fall semester on September 11th. LOP will offer nine ESL classes this fall, including two in-person ESL classes (Beginner and Intermediate) that will include childcare and child tutoring – one at Twinbrook Community Center and one at Lincoln Park community Center. Eight Conversation classes will be offered, all online.

Students can register for placement tests through the end of August. [See the full schedule](#) on our program page.

## Clinic Fall Fundraiser: Renaissance - A New Era of Transformation

Preparations for the Clinic Fall Fundraiser are in full swing!

The theme for the event will be “Renaissance: A New Era of Transformation,” highlighting the big plans in store for the future

of the Clinic. We are thrilled to announce that Monique Ashton has agreed to return as Event Chair, and Gabe Alborno will reprise his role as Master of Ceremonies.

Join us on Saturday, November 4th from 6:00-10:00pm at the Hilton Rockville to celebrate the Clinic's successes over the last year. Sponsorship opportunities are available now – [check out our event page](#) for information.

Keep an eye on your inbox – invitations will be sent out in September!



## Reach is Hiring

Applications are currently being accepted for the position of Executive Director. For more information and a full job description, [see our Jobs page](#).

If you know anyone who may be qualified and interested, please share the listing.

## Mark Your Calendars!

### LOP Fall Semester Begins

September 11th, 2023

### Agnes Saenz Commemoration Event

September 13th, 5:00pm-7:00pm

Kaseman Health Clinic  
8 West Middle Lane, Rockville

### Mayor & Council Candidate Forum

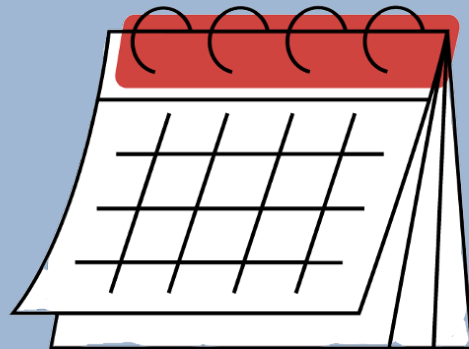
October 5th, 7:00pm

F. Scott Fitzgerald Theatre  
603 Edmonston Drive, Rockville

### Clinic Fall Fundraiser

November 4th, 6:00pm-10:00pm

Hilton Rockville (in person!)



## Volunteer Opportunities for Groups

Are you part of a group looking for a way to give back to your community? Reach has a variety of volunteer opportunities for groups of all sizes.

## Groups

### **Interior Painters**

Paint rooms in the homes of our senior clients

### **Furniture Movers**

Move/transport furniture from office and Housing Program

### **Leaf Rakers (October/November)**

Assist clients by raking leaves to the curb

### **Cleaning Supply Drives**

Collect supplies to support our programs

### **Holiday Toy Drives**

Collect toys for children in need

## Groups or Individuals

### **Kaseman Health Clinic Fundraiser (October/November)**

Assist with planning, set-up or at the event

### **Holiday Giving (Thanksgiving/December holidays)**

Help residents pick up food baskets and toys

### **Reach Annual Gala (April/May)**

Help solicit auction items, create gift baskets, and/or assist at the event

**Contact Us About  
Volunteering**



## Other Volunteer Opportunities

**INTERPRETERS** at the Kaseman Health Clinic are needed for four-hour shifts once a week. Currently, Mondays, 9am-12pm is the most urgent shift. Must be 18+.

**EVALUATORS FOR REACH PROGRAMS** - Reach programs are evaluated regularly by volunteers so the organization and the program leads can receive an objective opinion on what is working well and what improvements can be made. The work requires interviews with the program leads and others, at least one in-person visit, and the submission of a final written report. Volunteers should have an understanding of

evaluations, the ability to do research to determine best practices, and good writing skills. Some experience in the area that is being evaluated is helpful but not necessary.

**CLIENT INTAKE COORDINATORS** for Rockville Emergency Assistance Program (REAP). Are you a compassionate, detail-oriented person with a desire to help those in need? Work a four-hour shift weekly during business hours (ideally from 9 a.m. to 1 p.m. or 1 p.m. to 5 p.m.) to help us assist Rockville residents facing eviction, provide County residents with referrals for low-cost dental and other services, and much more. Training is provided.

### **Donations Requested:**

#### **For the Housing Program:**

A space that could be used as an art studio for a Jefferson House resident who works with oil paints and turpentine.

New or used toaster oven, four slice



toaster, or electric can opener for Rockland House.

**For Kaseman Health Clinic & Housing Program:**

C-Fold Paper Towels, Paper Towels, Hand Sanitizer, Antibacterial Hand Soap, Trash Bags, Disinfecting Wipes, Scouring Powder, Window Cleaner, Facial Tissue,

Bleach, Disinfectant Spray, Dishwashing Liquid

**For more information about these opportunities and current needs, please visit our [Volunteer Page](#) or contact us at [development@cmrocks.org](mailto:development@cmrocks.org).**

**FOLLOW US ON SOCIAL MEDIA**



**Community Reach of Montgomery County Board of Directors**

Board Chair Paul Love, Vice Chair Judy Ackerman  
Treasurer Lihua Zhang, Secretary Lou Kallas  
George Ashton, Rae Pearl Canizares, Oscar Portillo,  
Suzanne Rotbert, Jim Skinner, and Nancy Sushinsky  
Ex-Officio President and Executive Director Agnes Saenz  
Ex-Officio Donna Perry, Chair, MKHC Board

**MKHC Board of Directors**

Chair Donna R. Perry MD, Ryan Bertoli, Douglas Brough, Barbara Courtney MS RCEP FAACVPR  
Jackie Lobien RN, Susana Najera MS, Bridget Plummer RN, Stephanie Wright FNP PhD  
Ex-Officio Executive Director Agnes Saenz, Ex-Officio Paul Love, Chair, Reach Board,  
Ex-Officio Angeline Lazarus, MD, Medical Director

**DONATE TO HELP OUR COMMUNITY**



Community Reach of Montgomery County  
1010 Grandin Ave #A1, Rockville MD 20851  
301/637-0730 | [Info@CMRocks.org](mailto:Info@CMRocks.org) | [CMRocks.org](http://CMRocks.org)



Notice

Sent by [info@cmrocks.org](mailto:info@cmrocks.org) powered by



Try email marketing for free today!